



CUSTOM-DESIGNED PLANTS FOR INDUSTRIAL PRETREATMENT AND PAINTING PROCESSES OF METAL PRODUCTS  
**STATE-OF-THE-ART TECHNOLOGY**





Bianca LBB-8

Washing machine for Aluminium Beverage Cans, up to 2,400 cpm

## ABOUT US IMF ENGINEERING

IMF was founded in 1977 as a manufacturer of equipment for a wide range of industrial applications. A keen **vocation for innovation** made the company pursue specialisation in the sector of heat treatment and painting processes, making it stand out for its particular approach, oriented to devising original, custom-made solutions.

In 2010, as a consequence of corporate restructuring, IMF became IMF ENGINEERING, a move reflecting growth and **investment in human capital** – specialised technicians and engineers – to strengthen the quality of the processes involved in design, development, commissioning and customer care.

The **core business** of IMF ENGINEERING is the manufacturing of equipment for the finishing and painting of metal products like brake pads, light-alloy wheels, flexible tubes, aerosol aluminium cans, steel drums, with an

eye to innovative solutions also in the processing of other product types, including motorcycle helmet visors, insulation of electric motor wiring and many more applications.

Our DNA developed in the automotive sector and cylindrical packaging of various sizes, but since the very beginning, it evolved with the design and manufacturing of on-demand systems, like metal heat treatment ovens and equipment for washing aluminium cans. **Our customers ask, and we respond with dedicated solutions.**

We are a centre of excellence in the pre-treatment and painting of any metal manufactured product. Just try us.



# HOW WE WORK THAT IS, HOW EXCELLENCE IS CREATED

Our company rests on a solid foundation of specialist skills that cut across different sectors – but, first and foremost, on our ability to think, work and plan together.

The commercial area has always been in the forefront when it comes to understanding customer needs, translating **technological needs** into a specific design proposal and cost estimate.

The technical department is formed by highly qualified people with all-encompassing skills, covering the following domains:

- research & development
- study of new equipment and technical solutions
- 2D and 3D CAD design.

In particular, 3D design accelerates the implementation of project data management (sizing and mechanical, electrical calculations, etc.) and facilitates the design itself. A good 3D design optimises both time and resources, and enables more effective planning of activities and the attainment of the best final result. **A key step on the path to excellence.**

Moreover, our procurement competence enables us to locate the components most suitable for the design, compare supplier offers and manage the work in progress and quality phases optimally. And, wherever needed, we can guarantee the seamless integration of outsourced processes.

## PRODUCT AND PROCESS ENGINEERING

Less energy consumption, less environmental impact, compliance with customer specifications like footprint optimisation and flexibility for different production batches: we can do it because we know how to optimally organise **managerial and specialist competence**.

Because engineering is an exact science – man still lies at the core. And man's capacity to continue to find new solutions.

## KNOWLEDGE OF CUSTOMER PRODUCTION SYSTEMS

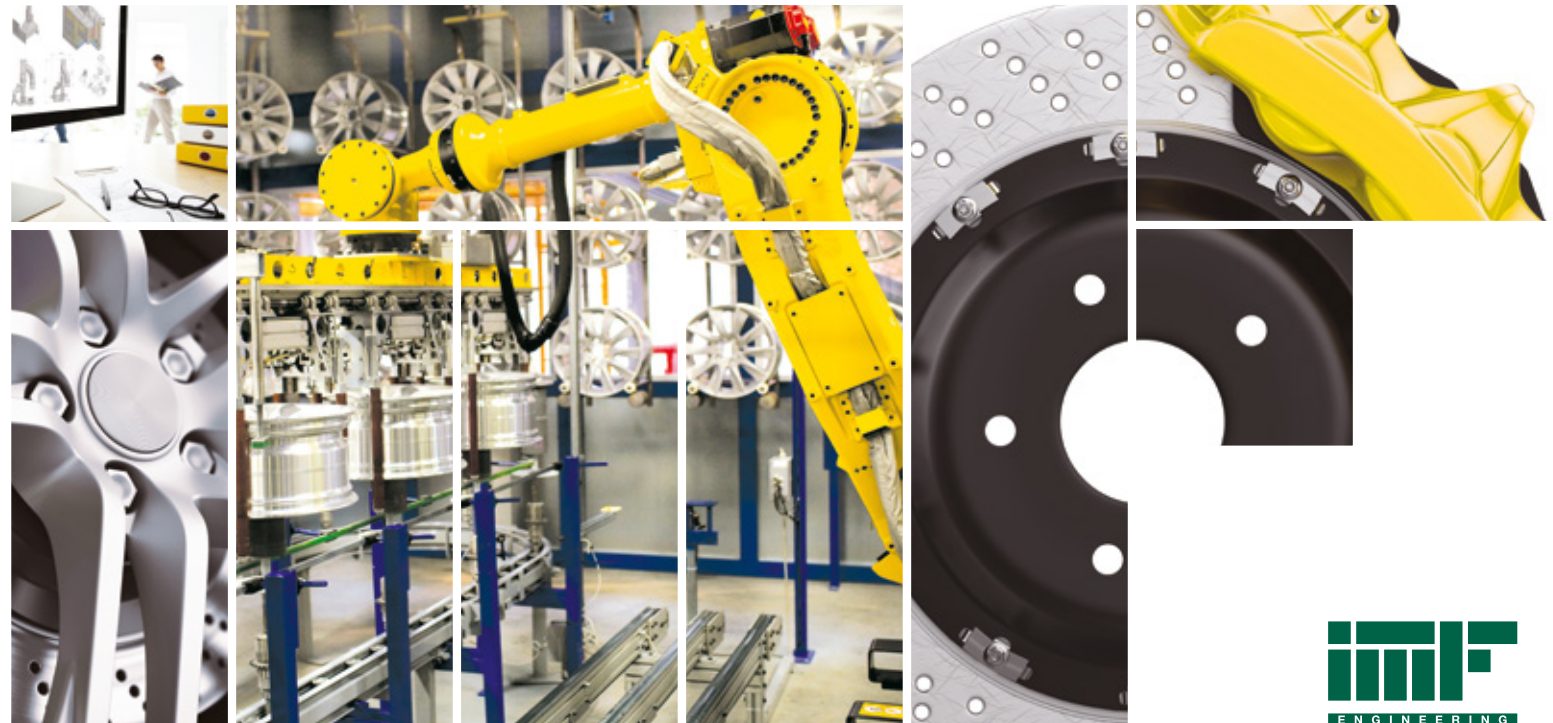
Through inspections of their production sites, our technicians study and analyse specific customer needs and investigate production process problems to devise the **best solution**. And since no two companies are exactly alike, we have never designed two identical plants.

It's our way of being close to our customers, now more than ever, as they cope with the dynamics of an increasingly competitive market. If business can't wait, we anticipate it.

## INNOVATION WITH A HIGH AUTOMATION CONTENT

Our equipment is designed with progressive levels of automation – up to fully automatic – matching company needs. Our **high level of specialisation** in production processes enables us to attain the highest levels of quality and innovation.

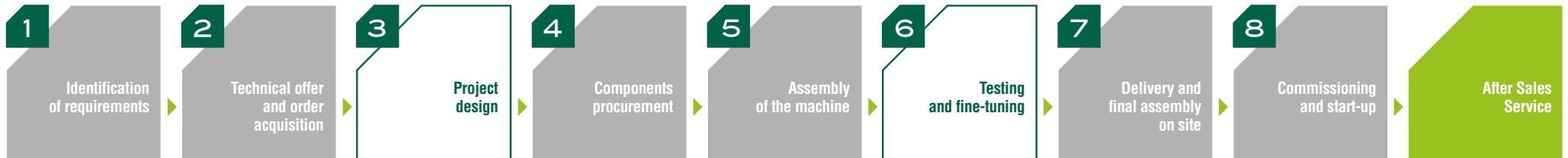
Only human talent can imagine the automation of the future – the same talent that represents our most important resource.



# OUR SERVICES

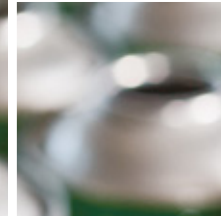
## PROJECT MANAGEMENT

Our project managers personally oversee the client's job order, from the kick-off meeting to final acceptance, following all the process phases step by step. The project manager co-ordinates the various corporate functions (technical office, procurement, workshop, commissioning, etc.) and keeps the client constantly informed about the work in progress.



## ACCURACY OF RESULTS

- **Excellent mechanical resistance of equipment**  
(carpentry, components of leading producers at a global level, etc.)
- **Excellent reliability** of equipment during the manufacturing process
- **Excellent quality** of end products, that we constantly guarantee, 24 hours a day, every day of the year





# AFTER SALES SERVICE

The size of the plant and its manufacturing capacity pose no problems for us. Because the most important thing is the accuracy and detail with which **our machines perform the task** required by the client.

When we talk about plant customisation, we mean precisely a tailor-made solution specially designed for that very client and that very situation. Thus, one capable of furnishing the desired solution with unparalleled efficiency and quality of execution.



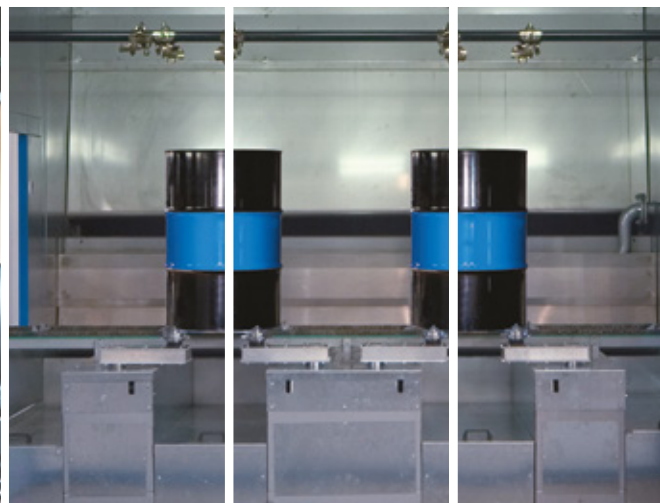
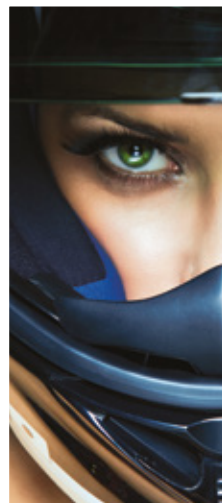
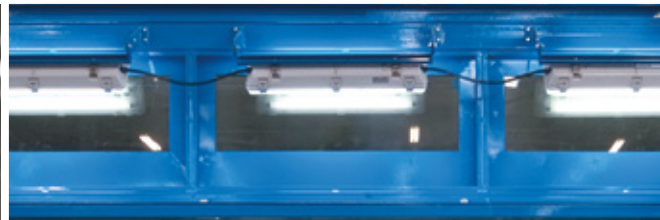
We are located close to Milan,  
in the very heart of Europe, near  
an important international hub, enabling us  
to quickly reach any destination.  
To be closer to our clients and their needs.

Our clients ask us for equipment that will ensure maximum finishing and varnishing quality of the finished products, quality that we can guarantee thanks to our expertise in the sector. Satisfying every single request with constant innovation, flexibility in customising, top-level service is the challenge we are faced with, day after day.

**EXCELLENCE HAS ALWAYS BEEN  
OUR POINT OF DEPARTURE.  
ARE YOU SURPRISED THAT IT IS  
ALSO OUR ULTIMATE  
DESTINATION?**

## Customer care is a key part of this process:

- in the commissioning of the machine at the client's production facilities, during which the operators are properly trained by our specialised technicians
- in the start-up test runs, after which the client verifies its proper functioning
- in the after sales service, both by remote assistance and by promptly sending in a qualified operator to attend to any need.





EXCELLENCE IN INDUSTRIAL PAINTING



**IMF ENGINEERING**

Via G. di Vittorio, 9 • 20016 Pero (MI) • Italy  
T +39 02 33910880 - [info@imfeng.eu](mailto:info@imfeng.eu) - [www.imfeng.eu](http://www.imfeng.eu)



UNIONE COSTRUTTORI  
IMPIANTI DI FINITURA

*we are shareholders of*  
 **Technopack**